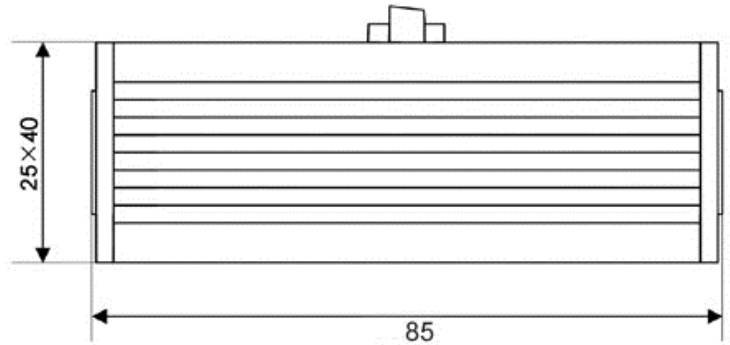
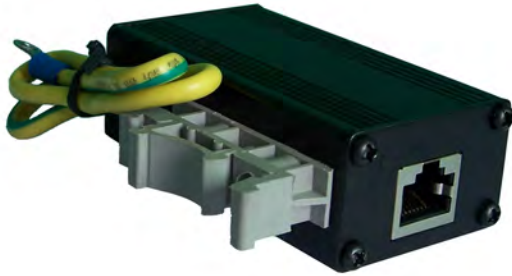




RJ45 High Speed Connection

Type:EN-6/RJ45HS-8 din rail type

Surge arrester for Ethernet, Twisted Pair, Cat 5 network systems against surges at the boundaries from lightning protection zone 0B-2 and higher.



- Data network protector in according with IEC61643:21.
- Limit the transients with gas discharge tubes and tranzorb diodes.
- Two-stage protection circuit.
- In aluminium housing.
- RJ45 connector for Cat 5 network technology, 10BaseT, 100BaseT.
- Simple installation.
- Also Application for analogue, ISDN, DSL system, Ethernet Twisted Pair.
- DIN-rails type is available.

Technical Data

Model No.		EN-6/RJ45HS-8
Nominal Voltage (Vac) Un		6
Max. Continuous Voltage (V) Uc AC/DC		6/8.5
Nominal Discharge Current (8/20us, KA) In		0.2 (L-L) /1.6(L-G)
Maximum Discharge current (8/20us, KA) Imax		0.3(L-L) /3.0(L-G)
Nominal Current (A) IL		100mA
Voltage protection level (8/20μs,V) Up	Line-Line	≤40
	Line-Ground	≤350
Voltage protection level (1KV/μs,V) Up	Line-Line	≤65
	Line-Ground	≤350
Transmission Speed Vs (bps)		100 M bps
Insertion loss at 100MHz (dB)		≤3.0
Response time	Line-Line	1ns
	Line-Ground	100ns
Pinning		1/2, 3/6, 4/5, 7/8
Type of Connection IN/OUT		RJ45 Female/ Female
Dimensions (mm)		85 X 25 X 40
Environment Temperature (°C)		-25~+70
Mount on		35mm din rail