

# GasScan™ Series

## Model PIDScan-800

**World's first fixed VOC gas monitor**  
with **built-in Self-Cleaning** feature  
for low maintenance and costs of ownership



### Special Features:

- Special I : auto-selfcleaning feature to improve operation performance without interruptive maintenance (option)
- Special II : auto-zeroing and auto-calibration for fast response and uncompromised accuracy
- Special III : built-in temperature and humidity sensors for accurate and real-time compensation
- Special IV : built-in alarm LED-ring lights (option) for easy of use and cost efficiency
- 4-20 mA analog output ranging from 0.1 to 100 ppm, 1 to 1000 ppm, or 0.01 to 20.00 ppm isobutylene (for ultra-sensitive version)
- PID sensor highly resistant to humidity interference
- Explosion proof EEx d IIC T6 for hazardous application
- With built-in diaphragm pump to draw in sample gas
- Large numerical and graphical dot-matrix display with backlight sensor
- Magnetic interface for non-intrusive operation
- Options for dry relay contacts, and built-in alarm LED-ring lights

**Ultra perfection.**

Riding on the achievements from legacy of precision  
and inner functionality.

# GAScan™ Series

## Model PIDScan-800

The PIDScan is a permanently mounted volatile organic compound (VOC) monitor, using a Photo-ionization detector (PID) which operates from a 24 Vdc power source, and provides an analogue output of 4 - 20 mA. There are available in full scale range of 20,00 ppm, 100.0 ppm and 1,000 ppm isobutylene equivalent. Housed in an explosion-proof enclosure, the PIDScan is equipped with a local digital display of the gas concentration and various functional features, such as built-in self-cleaning, dry relay contacts and alarm ring-LED lights.

### What is this built-in self-cleaning feature?

Under some environmental conditions, a contaminated sensor can interfere with the performance of the PID detector. To enhance the performance under such harsh conditions, the PID-800 device provides a smart processor to operate a multi-way valve, to control and regulate clean air to flow through the detection chamber. The principle of this apparatus is a cyclic application of clean air to neutralise and flush out the pollution and contamination inside the sensor, so that the sensor is always ready for fresh and accurate measurement. The user can select this mode on the device. The instrument signals the cleaning mode with a separate output.

### What is this built-in alarm ring-LED light feature?

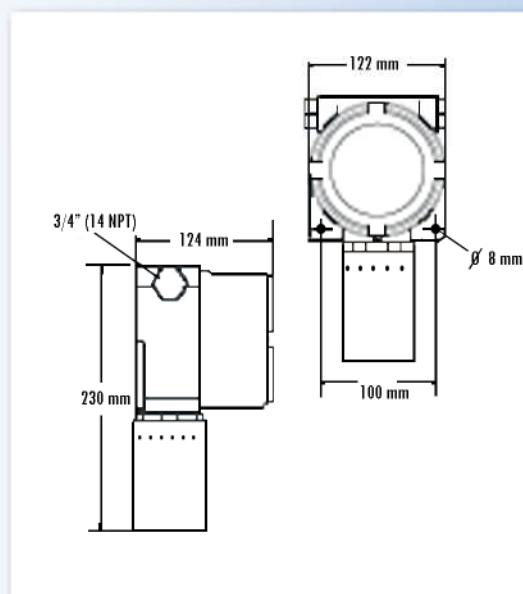
The PID-800 series has the option of built-in alarm lights, where a ring of LED lights will lit up in an alarm conditions. Under Alarm 1 condition, the LED ring-lights will flash RED intermittently. Under Alarm 2 condition, they will flash RED permanently. And finally, under Fault mode, the LED ring-lights will flash Yellow intermittently; thus showing all the various alarm conditions, yet visible from a distance, without any additional external alarm devices. A sound cost-saving feature, indeed!

### Specification:

		PIDScan800-1-A-B	PIDScan800-2-A-B	PIDScan800-3-A-B
PID sensor	10.6 eV			
Range/Resolution	0 - 1000 ppm / 1 ppm			
	0.0-100.0 ppm / 0.1 ppm			
	0.00-20.00 ppm / 0.01 ppm ( ultra sensitive version )			
	* with Temperature and Humidity compensation on board			
Self-cleaning	Built-in self-cleaning			
Relay contacts	SPST dry contacts (x2)	A = 6		
		= 0		
Ring LEDs Alarm	Built-in ring alarm LEDs; Yellow and Red	B = 7		
		= 0		

### Common specification to all:

Accuracy	0 - 100 ppm: +/- 2%
	0 - 1000 ppm: +/- 3%
Response Time	T90 < 30 sec
EX Approval	ATEX II 2 G EEx d IIC T6 (pending)
	UL Class I, Div I, Group B, C and D (pending)
IP Rating	IP66
EMI / RFI	Compliance to EMI / RFI Directive 89 / 336 / EEC
Power	24 Vdc; max. 2.4 Watt
Cable	3-wire shielded; max. 1kOhm at 24 Vdc
Output	4 - 20 mA
	MODBus RS 485-IS
	SPST relay contacts (x2), Fault relay, max. 30 V, 2 A.
Sampling method	Built-in diaphragm pump (~500 ml / sec)
Display	Graphic LCD 128 x 64 pixels, with backlight
User interface	Non-intrusive using magnetic key
Operating Cond.	Temperature: -20 degC to +55 degC (-4 degF to 131 degF)
	Humidity: 0 - 95%RH (non-condensing)
Physical Dim.	Weight: 2.5 Kg
	Dimension: L 126 x W 124 x H 243 (mm)



The above specifications are correct as of the time of printing; Subject to changes due to on-going product improvements



Distributed by: