

- Electromechanic plug-in-connection within ceramic housing
- Installation between connectors of two PV-modules or anywhere in the string
- Fast opening of the connection by a spring release mechanism, no arc occurrence
- In case of fire, automatic disconnection by high ambient temperature
- Mechanical disconnection by forcible breaking of the ceramic package
- Easy to install, usable as “switch-off” for other applications as well

### Technical Data:

Melting point adhesive : 120°C – 140°C

Pressure Spring: 80 – 100 N

Connecting Cabel Specs:

Nominal voltage: 600/1000 VAC, 1800VDC

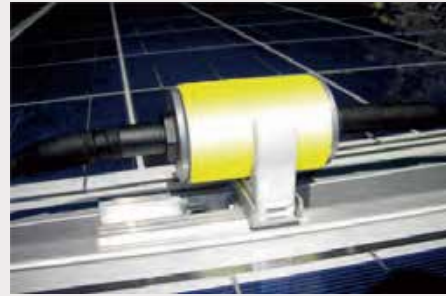
Nominal current: 42A by 30C acc. HD 604

Resistance: 5,09 Ohm/km / 5,09 ohms/km

Operating temperature: -40°C to +85°C

UV stability class acc. : HD 605.A1 / UL 1581 Sec. 1200

## Fire DC-FUSE



Dimension:  
Diameter: 135 mm  
Length: 570 mm  
Cable Length: 240 mm  
Colour: Red, Blue,  
Green, Yellow

