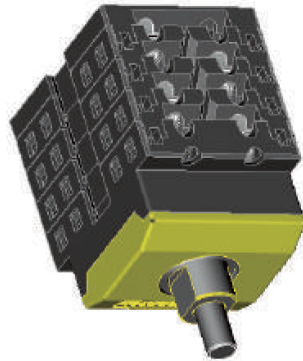
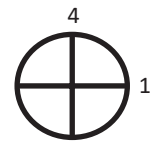




# Data Sheet Santon X-Type switch X100.32RL2E-(A)-E

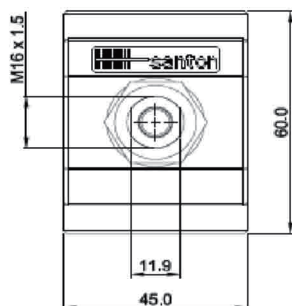
Switch disconnecter for solar application according to IEC 60947-3 by KEMA



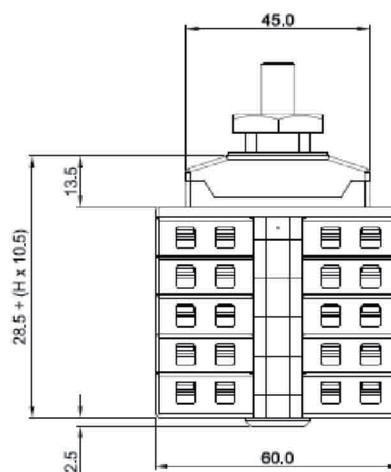
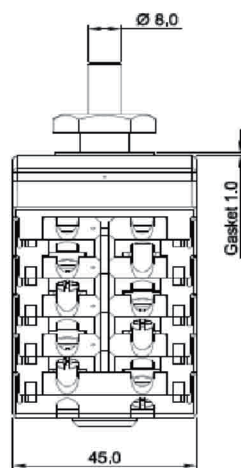
Layer No.	Marking	Symbol	Marking	On Positions			
				1	2	3	4
12		—/—					
11		—/—					
10		—/—					
9		—/—					
8		—/—					
7		—/—					
6		—/—					
5		—/—					
4		—/—					
3	-1	—/—	-1	X			
2		—/—	+1	X			
1		—/—	+1	X			

Contacts are made in "X" marked position.  
Symbols for interconnection: []

Technical data	Symbol	Merit	Unit
nominal voltage (DC poles)	Ue	1000	V dc
nominal current (DC poles)	Ie	32	A dc
nominal voltage (second rating DC poles, if requested)	Ue		V dc
nominal current (second rating DC poles, if requested)	Ie		A dc
method of mounting	reverse single hole mounting IP65 [R] terminals access from bottom side long gland		
number of DC poles		2	
utilization category DC		DC-21B	
actuator	without a knob, suitable for standard black		
positions	OFF at 12 hr, ON at 3 hr [E]		
rated impulse withstand voltage	Uimp	8	kV
insulation voltage	Ui	1000	V
rated thermal current uninterrupted duty	Iu	32	A
rated short-time withstand current (1s)	Icw	960	A
rated short-circuit making capacity	Icm	1,4	kA
rated conditional short-circuit current		3	kA
max. cut-off current			kA
max power dissipation		4,9	W
method of operation	independent manual operation		
minimum required dimensions of enclosures L x W x H*		124 x 47 x 63,5	mm
* see the drawing for the height of the switch. The number of layers H is:		3	
tightening torque terminal screws M4 , min. - max.	1,5	1,7	Nm
tightening torque for the nut on the single hole mounting knob, min. - max.	2,5	2,5	Nm
minimum required fine wire cross-section: IEC60947-1, table 9		6	mm <sup>2</sup>
ambient temperature allowed between		- 5 and + 40	°C
storage temperature allowed between		- 40 and + 80	°C
maximum relative humidity, without condensation at 20°C		90	%
pollution degree		2	
IP rating terminals		IP20	
IP rating gland of the shaft in case of single hole panel mounting		IP65	
nominal voltage (AC poles)	Ue	0	V ac
nominal current (AC poles)	Ie	0	A ac
number of DC poles		0	
auxiliary contact, nominal current 16A at 250 V, AC15	No auxiliary contact		
weight		194	g
accessories:	-		
	-		



H is the number of layers in the switch



**Mounting instructions**

In the application all ratings have to be respected. When building the switch in an enclosure, the space envelope must be respected. The terminals can take flexible wires up to 6 mm<sup>2</sup> and fork shoes for wires up to 10 mm<sup>2</sup> (type 3547C from Vogt). After mounting, the wiring must be checked and the switch must operate smoothly.

**Maintenance**

The X type switches are designed for a very long life but it is advised to do some simple yearly maintenance.

Check the installation for signs of overload or overheating. The terminals may not exceed the limit of 85°C under full load.

By operating the switch a few times (5x) the contacts will clean themselves and the switch will have a longer life.

Dimensions, specifications and data shown are be subject to change without notice.